

LOCK IN YOUR ORDER.

LOAD UP ON SAVINGS.

SEE YOUR OPTIONS



December 18, 2017

Utilizing Climate FieldView™ Monitoring Tools to Aid in Seed Selection and Placement

Climate FieldView™ monitoring tools are data analysis technology tools available to Channel® growers. Yield data can be collected utilizing the Climate FieldView Drive installed in the combine or by uploading yield data into the Climate FieldView from the standard yield monitor in your combine. Your local Seedsman, DSM, TA, or Climate representative can help with this process.

Once that is done, the Climate FieldView can be utilized to help determine which products performed best on your farm and help evaluate soil types and other factors that may help or hinder a given product's performance. Once that is understood, that knowledge can be used to help place products to help maximize yield potential across your operation. Let's start by looking at a Climate FieldView yield analysis tool screenshot showing harvest information for a harvested field (Figure 1).

Yield Analysis by Field



Figure 1. Climate FieldView Home Screen.

On the operation home screen as shown Figure 1, the performance of various products can be seen across an entire operation or a specific field with multiple products across a field can be selected to view their performance.

You can digitally drill down within a field to get an idea of how a product performed across the field (Figure 2). Areas that show lower yields are usually caused by variation in the field. The most common variable is soil type, as products often handle clay vs. loam vs. sandy soils differently. After selecting the field region report icon (Figure 2), you can circle an area of the field and see a detailed explanation of the yield by product and soil type in that area (Figure 2). Field elevation can also show differences, which are often correlated with soil type as hilltops often have different soils than lower areas or valleys in a field (Figure 3).

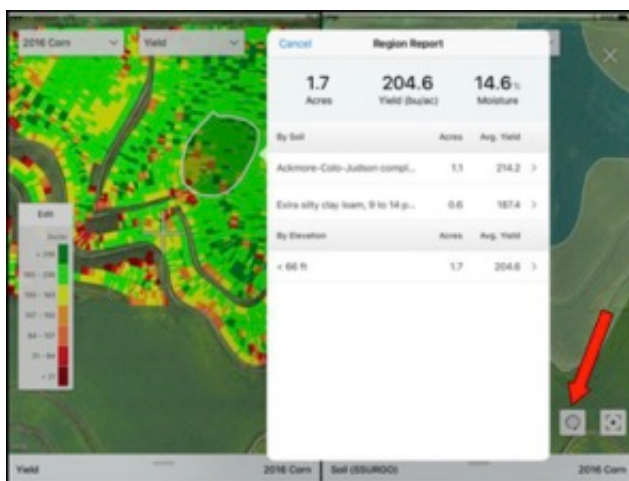


Figure 2. Areas within fields can be selected to view results.



Figure 3. Harps loam soil type selection.

This example is a field with two Channel® products, 208-23VT2PRIB Brand Blend and 207-02VT2RIB Brand Blend. When looking at the region report, 208-23VT2PRIB Brand Blend had an average of 4 bu/acre advantage across the 26-acre area drawn in the region report (Figure 4). Using only this information, a grower might decide that product is the best choice for this field in the future.



Figure 4. Region report.

There is also soil type information here. If selecting the Harps loam soil type, 208-23VT2PRIB Brand Blend shows an average 11 bu/acre advantage over 207-02VT2PRIB Brand Blend. However, when selecting another soil type, Canisteo clay loam, 207-02VT2PRIB Brand Blend shows an average yield advantage (Figure 5).



Figure 5. Canisteo soil type selection.

The ability to see on-farm performance by soil type can offer valuable information in the selection of products to help maximize yield performance on a given field. A farmer with a large percentage of Harps loam soil type may want to use 208-23VT2PRIB Brand Blend while on another field with Canisteo clay loam soil type, 207-02VT2PRIB Brand Blend, would be the better choice.

In addition to soil types, farmers can utilize the split screen option in Climate FieldView to see how other agronomics may impact yield. Farmers can upload soil sample information, which might include soil pH maps. As seen in Figure 5, soil pH can correlate to soil type and yield as well. A farmer could repeat the process used above to see if product A or product B might perform better with a certain soil pH.

Climate FieldView is a great way to take on-farm data and use that data to make high-impact decisions around product selection and on-farm placement. You can truly turn any field into a test plot and walk away with valuable information to add value to your farm.

Additional information on Climate FieldView can be obtained from your Channel Seedsman and visiting the Climate FieldView website at <https://climate.com>.

The Climate FieldView services provide estimates or recommendations based on models. These do not guarantee results. Consult your agronomist, commodities broker and other service professionals

before making financial, risk management and farming decisions. Information and recommendations we provide do not modify your rights under insurance policies purchased through our affiliates. More information at <http://www.climate.com/disclaimers>.

By: Brent Brekke | Agronomist

brent.brekke@channel.com

Sources: Climate nitrogen monitoring tool support trial. 2017. Regional Report. Channel.com.

<http://www.channel.com/agronomics/Documents/AgronomicContentPDF/ClimateNitrogenMonitoringToolS-Feb28-Channel-Corn.pdf>.

Climate FieldView™ website. <https://climate.com/>.

Websites verified 11/10/17

© 2018 Monsanto Company, All Rights Reserved

Refuge seed may not always contain Genuity® DroughtGard® Hybrids.

Certain statements contained in this presentation are "forward-looking statements," such as statements concerning the company's anticipated financial results, current and future product performance, regulatory approvals, business and financial plans and other non-historical facts. These statements are based on current expectations and currently available information. However, since these statements are based on factors that involve risks and uncertainties, the company's actual performance and results may differ materially from those described or implied by such forward-looking statements. Factors that could cause or contribute to such differences include, among others: continued competition in seeds, traits and agricultural chemicals; the company's exposure to various contingencies, including those related to intellectual property protection, regulatory compliance and the speed with which approvals are received, and public understanding and acceptance of our biotechnology and other agricultural products; the success of the company's research and development activities; the outcomes of major lawsuits and the previously-announced SEC investigation; developments related to foreign currencies and economies; pursuit of acquisitions or other transactions; fluctuations in commodity prices; compliance with regulations affecting our manufacturing; the accuracy of the company's estimates related to distribution inventory levels; the recent increases in and expected higher levels of indebtedness; the company's ability to fund its short-term financing needs and to obtain payment for the products that it sells; the effect of weather conditions, natural disasters, accidents, and security breaches, including cybersecurity incidents, on the agriculture business or the company's facilities; and other risks and factors detailed in the company's most recent periodic report to the SEC. Undue reliance should not be placed on these forward-looking statements, which are current only as of the date of this presentation. The company disclaims any current intention or obligation to update any forward-looking statements or any of the factors that may affect actual results.

This information is for **educational purposes only** and is not an offer to sell **Roundup Xtend™ with VaporGrip® Technology**. This product is not yet registered or approved for sale or use anywhere in the United States.

Commercialization is dependent on multiple factors, including successful conclusion of the regulatory process. **The information presented herein is provided for educational purposes only, and is not and shall not be construed as an offer to sell, or a recommendation to use, any unregistered pesticide for any purpose whatsoever.** It is a violation of federal law to promote or offer to sell an unregistered pesticide.

At this time, **Vistive® Gold soybeans** have received full approval for planting in the United States but have not yet received import

approval in certain export markets. While certain export approvals are pending, **Vistive® Gold soybeans** will be available in limited geographies only to growers who have signed a 2018 Vistive Gold Soybean Grain Production Grower Agreement and agree to follow the stewardship requirements. Upon receipt of appropriate approvals, Monsanto will inform growers and determine whether the stewardship requirements will need to remain in place.

Do not export Genuity® Roundup Ready® Alfalfa seed or crop, including hay or hay products, to China pending import approval. In addition, due to the unique cropping practices **do not plant Genuity® Roundup Ready® Alfalfa in Imperial County, California**, pending import approvals and until Monsanto grants express permission for such planting.

DO NOT APPLY DICAMBA HERBICIDE IN-CROP TO Bollgard II XtendFlex Cotton in 2018 unless a dicamba herbicide product is approved that is specifically labeled for that use in the location where you intend to make the application. Contact the U.S. EPA and your state pesticide regulatory agency with any questions about the approval status of dicamba herbicide products for in-crop use with Bollgard II XtendFlex Cotton.

IT IS A VIOLATION OF FEDERAL AND STATE LAW TO MAKE AN IN-CROP APPLICATION OF ANY DICAMBA HERBICIDE PRODUCT ON BOLLGARD II XTENDFLEX COTTON UNLESS THE PRODUCT LABELING SPECIFICALLY AUTHORIZES THAT USE.

Roundup Ready 2 Xtend™ soybeans has been approved for cultivation in the U.S. and Canada, and for import in Australia/New Zealand, Colombia, China, Japan, Korea, Mexico, Taiwan, and Vietnam. The single events in this product have been approved for import in the EU. As of February 2, 2018, E.U. stack approval is in the final stage of approval and is expected but not guaranteed to be received in the near future. Growers should refer to _____ for any updated information on import country approvals.

Roundup Ready 2 Xtend® soybeans contains genes that confer tolerance to glyphosate and dicamba. **Bollgard II® XtendFlex® cotton** contains genes that confer tolerance to glyphosate, dicamba and glufosinate. Glyphosate will kill crops that are not tolerant to glyphosate. Dicamba will kill crops that are not tolerant to dicamba. Glufosinate will kill crops that are not tolerant to glufosinate. Contact your Monsanto dealer or refer to Monsanto's Technology Use Guide for recommended weed control programs.

Monsanto Company is a member of Excellence Through Stewardship® (ETS). Monsanto products are commercialized in accordance with ETS Product Launch Stewardship Guidance, and in compliance with Monsanto's Policy for Commercialization of Biotechnology-Derived Plant Products in Commodity Crops.

B.t. products may not yet be registered in all states. Check with your Monsanto representative for the registration status in your state.

SmartStax® multi-event technology developed by Monsanto Company and Dow AgroSciences.

IMPORTANT IRM INFORMATION: Genuity® RIB Complete® corn blend products do not require the planting of a structured refuge except in the Cotton-Growing Area where corn earworm is a significant pest. **See the IRM/Grower Guide for additional information. Always read and follow IRM requirements.**

Insect control technology provided by Vip3A is utilized under license from Syngenta Crop Protection AG.

Individual results may vary, and performance may vary from location to location and from year to year. This result may not be an indicator of results you may obtain as local growing, soil and weather conditions may vary. Growers should evaluate data from multiple locations and years whenever possible.

For soybeans, each Acceleron Seed Applied Solutions offering is a combination of separate individually registered products containing the active ingredients:

BASIC Offering: metalaxyl, uxapyroxad, and pyraclostrobin.

STANDARD Offering: metalaxyl, uxapyroxad, pyraclostrobin, and imidacloprid.

Always read and follow pesticide label directions.

Acceleron® is a trademark of Monsanto Technology LLC. ILeVO®, Poncho®, and VOTIVO® are registered trademarks of Bayer. ©2017 Monsanto Company. All Rights Reserved.

NOT ALL formulations of dicamba or glyphosate are approved for in-crop use with Roundup Ready 2 Xtend[®] soybeans, Bollgard II[®] XtendFlex[®] or XtendFlex[®] cotton. ONLY USE FORMULATIONS THAT ARE SPECIFICALLY LABELED FOR SUCH USES AND APPROVED FOR SUCH USE IN THE STATE OF APPLICATION. DICAMBA FORMULATIONS MAY NOT BE APPROVED IN ALL STATES. Contact the U.S. EPA and your state pesticide regulatory agency with any questions about the approval status of dicamba herbicide products for in-crop use with Roundup Ready 2 Xtend[®] soybeans, Bollgard II[®] XtendFlex[®] or XtendFlex[®] cotton. Acceleron and Design[®], Acceleron[®], NemaStrike[™], DroughtGard[®], FarmFlex[®], Genuity Design[®], Genuity Icons, Genuity[®], Ground Breakers[®], Growing Knowledge and Design[®], Growing Knowledge[®], Integrated Farming Systems & Design[®], RIB Complete and Design[®], RIB Complete[®], Roundup and Design[®], Roundup Ready 2 Technology and Design[®], Roundup Ready 2 Xtend[™], Roundup Ready 2 Yield[®], Roundup Ready PLUS[®], Roundup Ready[®], Roundup Xtend[™], Roundup[®], SmartStax[®], VT Double PRO[®], VT Triple PRO[®], YieldGard VT and Design[®], YieldGard VT Triple[®] and YieldGard[®] are trademarks of Monsanto Technology LLC. SilageSmart[®] is a registered trademark of American Seeds, LLC. Channel[®] and the Arrow Design[®] and Seedsmanship At Work[®] are registered trademarks of Channel Bio, LLC. Liberty[®], LibertyLink[®], LibertyLink[®] and the Water Droplet Design[®], Poncho[®] and VOTIVO[®] are registered trademarks of Bayer. Herculex[®] is a registered trademark of Dow AgroSciences LLC. Headline AMP[®] and Headline[®] are registered trademarks of BASF Corporation. Respect the Refuge and Corn Design[®] and Respect the Refuge[®] are registered trademarks of National Corn Growers Association. All other trademarks are the property of their respective owners. © 2018 Monsanto Company.



Before opening a bag of seed, be sure to read, understand and accept the stewardship requirements, including applicable refuge requirements for insect resistance management, for the biotechnology traits expressed in the seed as set forth in the Monsanto Technology/Stewardship Agreement that you sign. By opening and using a bag of seed, you are reaffirming your obligation to comply with the most recent stewardship requirements.